



Rutvik
Enterprises

Enriching Ayurveda

Manufacturer of Herbal Extracts and Formulations

Rutvik Enterprises, established in 2018, is one of the leading manufacturer, Herbal Extracts Personal Care Extracts, Essential Oils, and Our product range is comprehensive, which comprises of Essential Oils, Herbal Extracts.

The offered products are effective, have a long shelf life, safe to use, precise in terms of composition and free from contaminants.

Rutvik enterprises has earned a well known name in domestic and international markets as natural ingredient supplier with several years knowledge and experience in the natural products industry. We build long term relationships and therefore have the patience and maturity to work with customers who are developing new products, even if it means small orders in the beginning. At the same time we can also supply container loads to those who need larger quantities.

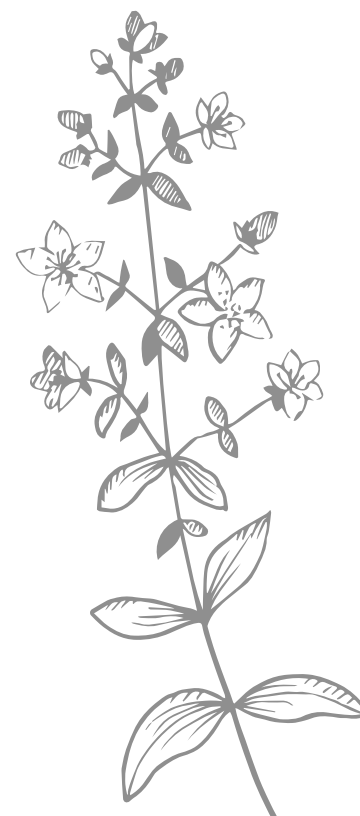
Mission and vision:

To position Rutvik enterprises as a leader in enriching lives through ayurved's own ingredients as food, nutrition and medicines for mankind. We aim at providing the best in quality & services to our clients widely spread all over the world. We prefer to grow dynamically while following the Environmental rules & regulations, respecting the social goals like health, education and community development.

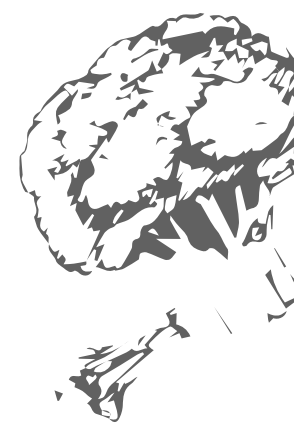
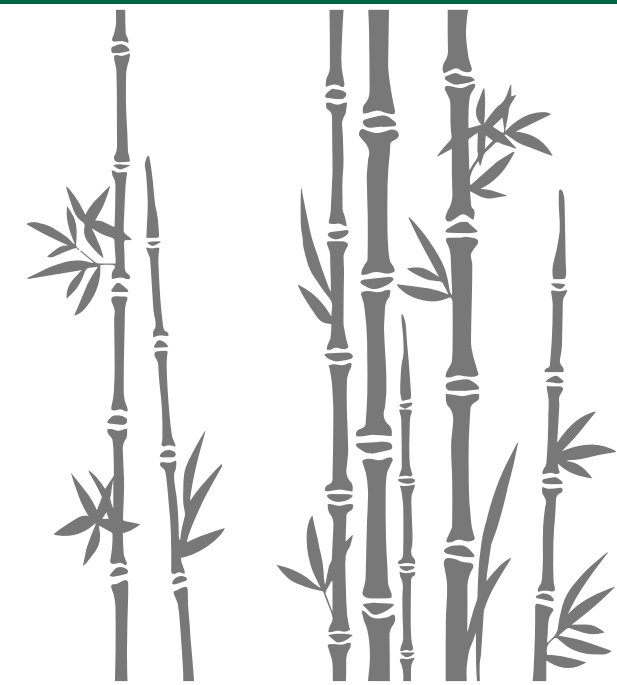
We at Rutvik enterprises are devoted to provide quality products with quality services to our customers at every level. In our devotion to maintain quality standards we maintain several checks in place, starting from the source till it reaches the end users.

The team at Rutvik enterprises understand that, in the long run, success in business can only be achieved, if a company takes adequate care of product quality, prices and the customers.

1. Acai berry extracts 4:1 , 5 % Vit C
2. Acer Saccharum Extract 10:1
3. Acerola Extracts 10:1
4. Acorus Calamus Extract 10:1
5. Aflapin Extract 10% AKBA by HPLC
6. African mango – Irvengia gabonensis Extracts 10:1
7. Aguaje fruit Extracts 10:1
8. Alfa Alfa Extracts 10:1
9. Allium Cefa Extract 10:1
10. Aloe Vera Extract 10:1
11. Amala Extract 10:1
12. Apple cider Powder
13. Apricot Extracts
14. Artichoke Extracts 2.5 % Cynarin
15. Ashwagandha Extract 2.5% Withanolide by Gravymetry
16. Aspalathus Linearis Extract 10:1
17. Asparagus racemosus Extracts 20 %
18. Astragalus Extracts 10:1
19. Avacado soyabean unsaponified 30 %(ASU)
20. Avena sativa Extracts 10:1
21. Bacopa 20 % Bacoside
22. Bamboo Extracts 70 % Silica
23. Bear Berry Extract 10:1
24. Berberin HCl 97 %
25. Bijora Bada Nimbu Extract 10:1
26. Biliberry Extracts 25 %
27. Black cohos Extracts 2.5 % Triterpine
28. Black current Extracts 10:1
29. Black Tea Extracts
30. Black Wull Nut Hull Extract 10:1



31. Blue berry Extracts 4:1
32. Boswellia AKBA 30 %
33. Boswellia Extract 65% Boswellic Acid
34. Boswellia serreta Extracts 65 % Boswellic Acid
35. Broccoli Extracts 10:1
36. Burdock Root Extracts 10:1
37. Caffeine Extract 95% by HPLC
38. Camellia Oleifera Extract 10:1
39. Camu Camu Extract 10:1
40. Caraduus Marianus Extract 10:1
41. Caralluma fimbrita Extracts 10:1
42. Carica papaya leaf Extracts 10:1 v
43. Cat's Claw Extracts 10:
44. Catuba bark Extracts 10:1
45. Cayenne Pepper Extract 10:1
46. Celastrus Paniculatus Extract 10:1
47. Cellery seed Extracts 10:1
48. Centella Asiatica Extract 10:1
49. Ceratonia Siliqua Extract 10:1
50. Chamomile Extracts
51. Chicory Pulp Extract 10:1
52. Chlorella Extracts 10:1
53. Cinnamon Extracts 20 %
54. Cissus quadrangularis Extracts 2.5 % Kitosteron
55. Citrus Aurantium Dulcis Fruit Extract 10:1
56. Citrus Bigarardia Extract 10:1
57. Citrus Lemon Fruit Extract 10:1
58. Convolvulus Pluricaulis Extract 10:1
59. Corn silk Extracts 10:1
60. Cranberry Extracts 25 % PAC
61. Crataegus Sp. Extract 10:1
62. Curcuma Longa Extract 10% Curcumin
63. Curcumin 95 %



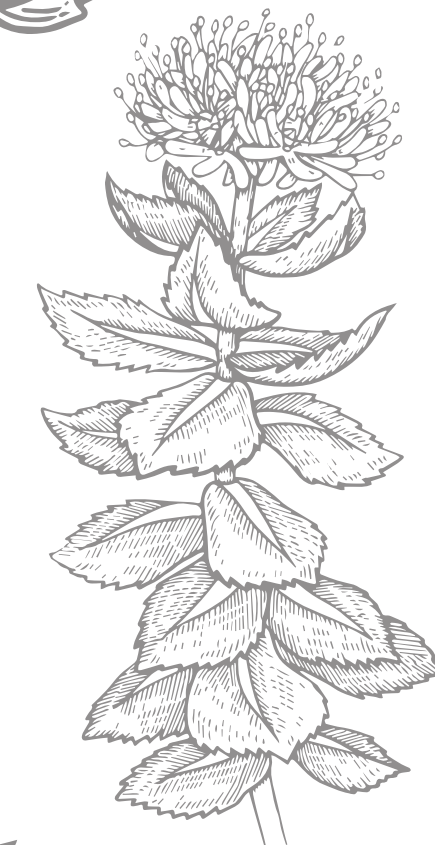
64. Cynara Scolymus Extract 10:1
65. Cynodon Dactylon 10:1
66. Damiana leaf Extracts 10:1
67. Dandelion Extracts 10:1
68. DHA Powder 10 % VEG
69. Dong quai – Angelica sinensis Extracts 10:1
70. Echinacea Extracts
71. Elder berry Extracts 10:1
72. Ephedru Extract 10:1
73. Equisetum Arvense Extract 10:1
74. Fenugreek Extracts 40 % Saponin
75. Fever few Extract 10:1
76. Fumaria Officinalis Extract 10:1
77. Ganoderma Extracts 20 % Polysacchride
78. Garcinia cambogia Extracts 60 %
79. Garlic Extracts 3 % Allicin
80. Gaurana seed Extracts 10 % Caffeine
81. Gensing Extract 20% Ginsenoside by UV
82. Ginger Extracts 5 % Gingerol
83. Gingko biloba Extracts 24 % Gingko flavon 6 % Gingko lactone
84. Ginseng Extracts 20 % Ginsenoside
85. Glycyrrhiza Glabra Extract 10:1
86. Gojiberry Extracts 20 % Polysacchride
87. Golden seal Extracts 10:1
88. Gorakhganza Extract 10:1
89. Grape seed Extracts 95 % OPC
90. Graviola Extracts 10:1
91. Green Apple Extracts 10:1
92. Green coffee bean Extracts 50 % Chlorogenic Acid
93. Green Tea Extracts - Instant – 50 % & 90 %
94. Greffonia seed Extracts 5 HTP 99 %
95. Guggal Extracts 2.5 % Guggulsterone
96. Gymnema Extracts 25 % Gymnimic Acid
97. Harpagophytum Dry Extract 5 % Herpagoside by HPLC



98. Hawthorn berry Extracts 10:1
99. Hoodia gordonii Extracts 10:1
100. Horny goat Weed Extracts 5 % Icarin
101. Horse chest nut Extracts
102. Horsetail Extracts
103. Hypericum Perforatum Extract 10:1
104. Irvengia Extract 10:1
105. Ivy leaf Extracts 10:1
106. Java Tea – Orthosiphon Extracts
107. Kalmegh Dry Extract 10:1
108. Kava Kava Extracts
109. Kelp Extracts 10:1
110. Kiwi seed Extracts 4:1
111. Kudzu root Extracts 40 % Isoflavone
112. L Arjinin
113. L Glutathion - Reduced
114. Lemon Extract 10:1
115. Lemon Grass Extract Powder 10:1
116. Maca Root Extracts 15 % Sterol
117. Mangosteen Extracts 10 % Xanthon
118. Melissa leaf Extracts 10:1
119. Momordica Charantia 10:1
120. Moringa leaf Extracts 10:1
121. Motherwort Extract 10:1
122. Mucuna puranis Extracts 20 % L Dopa
123. Mulberry leaf Extracts 1 % DNJ
124. Muria Puma Extracts 10:1
125. Nardostachys Jatamansi 6:1
126. Natural caffeine 99 %
127. Neem Extract Powder 10:1
128. Nelumbo nucifera Extracts 10:1
129. Nettle root Extracts 10:1
130. Nigella sativa Extracts



131. Noni Extract 10:1, 40 % Saponin
132. Olea Europea Extract 15% Oluperon
133. Olive leaf Extracts 20 % Oleuperon
134. Omega 3 Extract
135. Opentia cactus Extracts 10:1
136. Opuntia Ficus Indica Extract 10:1
137. Panax Ginsen Extract 10:1
138. Papaya leaf Extracts 10:1
139. Passion flower Extracts 10;1
140. Peach Extract 10:1
141. Pepper Mint Extract 10:1
142. Peumus Boldus - Leaves Extract 10:1
143. Pine Bark Extract 95% Pycnogenol by UV
144. Pine bark Extracts 95 % Pycnogenol
145. Piperine Powder 95 %
146. Plantago Lanceolata Extract 10:1
147. Plum Extract 10:1
148. Polypodium leucotomus Extracts 10:1
149. Pomgranate Extracts 40 % Elagic Acid
150. Propolis Extract 10% Flavnoidn
151. Pueraria mirifica Extracts 10:1
152. Pumpkin Seed 10:1
153. Punarnava Extract 10:1
154. Pushkermool Extract 10:1
155. Pygeum bark Extracts 10:1
156. Queracetin Powder 95 %
157. Raspberry Extract 10:1
158. Red clover Extracts 10 % Isoflavon
159. Red Raspberry Extracts 10 % Raspberry Kitone
160. Red Wine Extract 10:1
161. Red yeast Rice Extracts 1%
162. Reservetrol 99 % from Grape skin
163. Rhodiola rosea Extracts 3 %



164. Ricinus Communis Extract 10:1
165. Rose hip Extracts 20 %
166. Rose Petals Powder Extract 10:1
167. Rosmarinus Officinalis - Leaves Extract 10:1
168. Rosmerry Extracts 20 %
169. Rubia Cordifolia Extract 10:1
170. Rumicis Extract 10:1
171. Rutin from Fruit Peels 95%
172. Saccharum Officinalis Extract 10:1
173. Safed musli Extracts 40 % Saponin
174. Salix Alba Extract 10:1
175. Saw palmetto Extracts 25 % Fatty Acid
176. Saw palmetto Extracts 25 % Fatty Acid
177. Seabuckthorn Powder SD
178. Siberian Ginseng Extracts 0.8 % Eleutheroside
179. Silderitis Angustifolia Extract 10:1
180. Sily marin – Milk thistle Extracts 80 %
181. Soapnut Extract 10:1
182. Soya isoflavon Extracts 40 %
183. Soya isoflavon Extracts 40 %
184. Spirulina 70 %
185. St. Johns Wart Extracts 0.5 % Hypericine
186. Stevia Extracts 90 % Stevioside
187. Tinospora cardifolia Extracts 5 % Bitter
188. Tongkat Ali Extracts 100:1
189. Tribulus terrestris Extracts 40 % Saponin
190. Urtica Sp. Extract 10:1
191. Uva ursi Extracts
192. Vaccinium Myrtillus Extract 25% Anthocyoniding
193. Vadarikand Extract 10:1
194. Valerian officinalis Extracts 0.8 %
195. Velvet Bean Extract 10% L Dopa
196. Vitex agnus Castus Extract 10:1
197. Vitex agnus Extracts 0.5 % Agnuside



Dry Extracts

1. Abhal Dry Extract (**Juniper**)
2. Ajmoda Dry Extract (**Apium Graveolens**) (Vol Oil 2%)
3. Ajwain Dry Extract (**Carum copticum**)
4. Akarkara Dry Extract (**Anacyclus pyrethrum**) (Pyrethrins 0.5%)
5. Akhrot Dry Extract (**Juglans regia**)
6. Alfa Alfa Dry Extract (**Medicago sativa**) (Sterols 2%)
7. Amaltas Dry Extract (**Cassia fistula**) (Antraquines 3%)
8. Amla Dry Extract (**Phyllanthus emblica**) (Tannin 30%)
9. Amrood Dry Extract (**Psidium guajava**) (Tannin 5%)
10. Anantmool Dry Extract (**Hemidesmus indicus**) (Saponin 7%)
11. Anar Dana Dry Extract (**Punica Granatum**) (Alicin 5%)
12. Apamarg Dry Extract (**Achyranthes aspera**) (Tannin 5%)
13. Arand Dry Extract (**Ricinus Communis**) (Tannin 5%)
14. Arand Leaf Extract (**Ricinus Communis**) (Tannin 5%)
15. Arjun Dry Extract (**Terminalia arjuna**) (Tannin 10%)
16. Arlu Dry Extract (**Oroxylum indicum**) (Tannin 5%)
17. Arni Dry Extract (**Premna intgrifolia**) (Sterols 2%)
18. Ashoka Dry Extract (**Saraca indica**) (Tannin 5%)
19. Ashwagandha Dry Extract (**Withania somnifera**) (Withanoloids 2.5%)
20. Astavarg Dry Extract (**Gentiana Olivieri Griseb**)
21. Atis Dry Extract (**Aconitum heterophyllum**) (Tannin 5%)
22. Babchi Dry Extract (**Psoralea corylifolia**) (Psoralen 5%)
23. Babool Dry Extract (**Acacia nilotica**) (Saponin 20%)
24. Baccopa Dry Extract (**Baccopa monnieri**) (Bacosides 20%)
25. Badrangboya Dry Extract (**Melochia corchorifolia**) (Saponin 10%)
26. Bahera Dry Extract (**Terminalia belerica**) (Tannin 20%)
27. Bala Dry Extract (**Sida cordifolia**) (Alkaloids 0.3%)
28. Banaba Dry Extract (**Legerstroemia speciosa**) (Corosolic acid 1%)
29. Bans Patra Dry Extract (**Bambusa arudinacea**)
30. Barseem Dry Extract (**Trifolium alexandrianum**) (Protein 50%)



31. Belpatra Dry Extract (*Aegle mormelos*) (Tannin 5-7%)
32. Bharangi Dry Extract (*Cleroderdrum serratum*) (Saponin 5%)
33. Bhringraj Dry Extract (*Eclipta alba*) (Wedalactone 3%)
34. Bhumi Amla Dry Extract (*Phyllanthus niruri*) (Bitters 2.5%)
35. Brahmi Dry Extract (*Centella asiatica*) (Saponin 20%)
36. Biranjashpha Dry Extract (*Achillea Millefolium*) (Alkaloids 0.5%)
37. Caraluma Dry Extract (*Caralluma Fimbriata*) (Saponin 30%)
38. Chameli Dry Extract (*Jasminum fluminense*) (Tannin 5%)
39. Chandrashur Dry Extract (*Lepidium Sativum*) (Alkaloids 0.3%)
40. Cheledoium Dry Extract (*Cheledoium*)
41. Chhadila Dry Extract (*Parmelia Perlata*) (Mucilage 10%)
42. Chirayata Dry Extract (*Swertia chirata*)
43. Chitrak mool Dry Extract (*Plumbago zylanica*) (Tannin 5%)
44. Chopchini Dry Extract (*Smilax china*) (Tannin 5%)
45. Chuwara Dry Extract (*Lagenaria siceraria*) (Tannin 5%)
46. Coleus Dry Extract (*Coleus forskohlii*) (Forskohlin 20%)
47. Curry Leaf Dry Extract (*Murraya koenigii*) (Tannin 5%)
48. Dalchini Dry Extract (*Cinnamomum zeylanicum*) (Tannin 5%)
49. Daruhaldi Dry Extract (*Berberis aristata*) (Berberine 10%)
50. Dashmool Dry Extract (Tannin 5%)
51. Devdar Dry Extract (*Cedrus deodara*) (Vol Oil 2%)
52. Devils Clow Dry Extract (*Harpagophytum procumbens*) (Hypergophytum 3%)
53. Dhai Phool Dry Extract (*Woodfordia fruticosa*) (Tannin 3%)
54. Dhania Dry Extract (*Coriandrum Sativum*)
55. Draksha Dry Extract (*Vitis Vinifera*) (OPC 15%)
56. Dub Ghas Dry Extract (*Cynodon dactylon*) (Sterols 1%)
57. Dudal Dry Extract (*Taraxacum officinale*) (Protein 15%)
58. D G L (Mulethi) Dry Extract (*Glycyrrhiza glabra*) (Glyrizine 3%)
59. Elaichi Dry Extract (*Elettaria cardamomum*) (Vol Oil 2%)
60. Ful Babuna Dry Extract (*Matricaria chamomilla*) (Mucilage 10%)
61. Gadab Ghas Dry Extract (*Medicago sativa*) (Saponin 1%)
62. Gajar Fruit Dry Extract (*Daucus carota*) (Beta-carottinge 3%)
63. Gajar Seed Dry Extract (*Daucus carota*) (Flavnes 5%)



64. Gambhari Dry Extract (*Gmelina arborea*) (Alkaloid 0.3%)
65. Gandhprasarni Dry Extract (*Plectris foetida*) (Alkaloid 0.5%)
66. Garcinia Dry Extract (*Garcinia cambogia* 50%)
67. Garlic Dry Extract (*Allium sativum*) (Allin 1.5-2.5%)
68. Gheekunvar Dry Extract (*Aloe vera*) (Alovin 5%)
69. Ginseng Dry Extract (*Panax Ginseng*) (Ginsenosides 20%)
70. Gokhru Dry Extract (*Tribulus terrestris*) (Saponin 40%)
71. Gorakhmundi Dry Extract (*Sphaeranthus indicus*) (Alkaloids 0.3%)
72. GreenTea Dry Extract (*Camellia sinensis*) (Polyphenols 50%)
73. Gudhal Dry Extract (*Hibiscus Rosa Sinensis*) (Tannin 5%)
74. Guduchi Dry Extract (*Tinospora cordifolia*) (Bitters 2.5%)
75. Guggal Dry Ext.(Purified) (*Commiphora mukul*) (Guggulstrone 3-5%)
76. Guggal Dry Extract (*Commiphora mukul*) (Guggulstrone UV 3%)
77. Gulab Dry Extract (*Rosa damascena*) (Resin 5%)
78. Gular Pan Dry Extract (*Ficus glomerata*) (Antraquines 3%)
79. Gulbanafsa Dry Extract (*Viola odorata*) (Mucilage 20%)
80. Gurbach Dry Extract (*Acoras calmus*) (Glycosides 3%)
81. Gurmala Dry Extract (*Cassia fistula*) (Tannin 5%)
82. Gymnema Dry Extract (*Gymnema sylvestre*) (Gymnemic acid 25%)
83. Haldi Dry Extract (*Curcuma longa*) (Curcumine 15%)
84. Hansraj Dry Extract (*Adiantum capillus*) (Alkaloids 0.2%)
85. Hansraj Dry Extract (*Adiantum capillus*) (Alkaloids 0.2%)
86. Haritaki Dry Extract (*Terminalia chebula*) (Tannin 30%)
87. Harsingar Dry Extract (*Nyctanthes arbortristis*) (Tannin 5%)
88. Hatjor Dry Extract (*Cissus qudrangularis*) (3-Ketosterones 2.5%)
89. Hawthorn Dry Extract (*Crataegus* Tannin 5%)
90. Hermal Dry Extract (*Peganum harmala*) (Mucilage 10%)
91. Himsara Dry Extract (*capparis spinosa*) (Tannin 5%)
92. Hing Dry Extract (*Ferula asafoetida*) (Vol Oil 1%)
93. Hirabol Dry Extract (*Commiphora myrrha*) (Vol Oil 3%)
94. Hydrastis Dry Extract (*Hydrastis canadensis*) (Vol Oil 1%)
95. Imli Dry Extract (*Tamarindus indiaca*) (Tartaric Acid 10%)
96. Indrain Dry Extract (*Citrullus Colocynthis*) (Tannin 5%)



97. Ipecac Dry Extract (*Cephaelis ipecacuanha*) (Alkaloids 2%)
98. Jaiphal Dry Extract (*Myristica fragrans*) (Vol Oil 2%)
99. Jamun Dry Extract (*Eugenia jambolana*) (Bitters 2.5%)
100. Jatamasi Dry Extract (*Nardostachys jatamansi*) (Jatamansic acid 2%)
101. Jaw Dry Extract (*Hordueum sativum*)
102. Jawasa Dry Extract (*Alhagi Maurorum*) (Tannin 2%)
103. Jawitri Dry Extract (*Myristica Fragrans*) (Vol Oil 3%)
104. Jeera Dry Extract (*Cuminum cyminum*) (Vol Oil 3%)
105. Jhavuka Dry Extract (*Taraxacum gallica*) (Tannin 20%)
106. Jiwanti Dry Extract (*Leptadenia reticulata*) (Saponin 10%)
107. Jwar Dry Extract (*Sorghum Bicolor*) (Mucilage 20%)
108. Kachanar Dry Extract (*Bauhinia variegata*) (Tannin 5%)
109. Kaiphal Dry Extract (*Myrica Esculenta*) (Tannin 10%)
110. Kakar Singhi Dry Extract (*Pistacia integerrima*)
111. Kala Til Dry Extract (*Guizojia Abyssynica*) (Vol Oil 3%)
112. Kaladana Dry Extract (*Ipomoea hederacea*) (Tannin 5%)
113. Kali Mirch Dry Extract (*Piper Nigrum*) (Vol Oil 2%)
114. Kali Musli Dry Extract (*Curculigo orchioides*) (Mucilage 20%)
115. Kaliharimool Dry Extract (*Gloriosa superba*) (Alkaloid 0.5%)
116. Kalmegh Dry Extract (*Andrographis paniculata* *Andrographolides*)
117. Kalonji Dry Extract (*Nigella sativa*) (Saponin 10%)
118. Kaner Dry Extract (*Nerium indicum*) (Tannin 10%)
119. Kantkari Dry Extract (*Solanum Xanthocarpum*) (Saponin 10%)
120. Kapas beej Dry Extract (*Gossypium arboreum*) (Havnes 1%)
121. Kapas mool Dry Extract (*Gossypium arboreum*) (Flavnes 1.5%)
122. Karanj Dry Extract (*Pongamia pinnata*)
123. Karela Dry Extract (*Momordica charantia*) (Bitter 4%)
124. Kasaundi Panchang Dry Ext. (*Cassia occidentalis*) (Bitter 1%)
125. Kasaundi Seed Dry Extract (*Cassia occidentalis*) (Tannin 5%)
126. Kasni Dry Extract (*Cichorium intybus*) (Tannin 5%)
127. Kaunch seed Dry Extract (*Mucuna pruriens*) (Protein/Levodopa 10%)
128. Khadeer Dry Extract (*Acacia catechu*) (Tannin 5%)
129. Kheera Dry Extract (*Cucumis Sativas*) (Mucilage 30%)



130. Khulanjan Dry Extract (*Alpinia galanga*)
131. Khursani Ajawain Dry Ext. (*Hyoscyamus niger*)
132. Kuda Chhal Dry Extract (*Holarrhena Antidysenterica*) (Tannin 5%)
133. Kulthi Dry Extract (*Dolichos biflorus*) (Saponin 20%)
134. Kutaj(Kuda) Chal Dry Ext. (*Holarrhena antidysenterica*) (Tannin 5%)
135. Kuth(Uplet) Dry Extract (*Saussurea Lappa*) (Alkaloid 0.2%)
136. Kutki Dry Extract (*Picrorrhiza kurroa*) (Bitters 4%)
137. Lal Behman Dry Extract (*Salvia haematodes*) (Vol Oil 1%)
138. Lal Chandan Dry Extract (*Ptero carpus santalinus*)
139. Lodhra Dry Extract (*Symplocos racemose*) (Tannin 10%)
140. Long Dry Extract (*Syzygium aromaticum*) (Vol Oil 2%)
141. Mahi Dry Extract (*Sangesar Mahi*) (Tannin 5%)
142. Majista Dry Extract (*Rubia cordifolia*) (Tannin 5%)
143. Majuphal Dry Extract (*Quercus Infectoria*) (Tannin 20%)
144. Makhana Dry Extract (*Euryale ferox*) (Flavones 1%)
145. Makoi Dry Extract (*Solanum nigrum*) (Bitters 1%)
146. Malkangni Dry Extract (*Celastrus paniculatus*) (Vol Oil 3%)
147. Masparni Dry Extract (*Teramnus labialis*) (Tannin 10%)
148. Meetha Neem Dry Extract (*Curry Leaf*) (Resin 5%)
149. Mehandi Leaves Dry Extract (*Lawsonia alba*) (Tannin 5%)
150. Methi Dry Extract (*Trigonella foenum- graecum*) (Saponin 20%)
151. Mocharas/Semal Dry Extract (*Salmalia malabarica*) (Bitters 2%)
152. Mooli Beej Dry Extract (*Raphanus sativus*) (Vol Oil 2%)
153. Moringa Dry Extract (*Moringa oleifera*) (Saponin 20%)
154. Mulethi Dry Extract (*Glycyrrhiza glabra*) (Glycyrrhizin 10%)
155. Muskdana Dry Extract (*Abelmoschus moschatus*) (Resin 3%)
156. Nagarmotha Dry Extract (*Cypenus scarious*) (Resin 2%)
157. Nagkeshar Dry Extract (*Mesua ferrea*) (Bitters 2.5%)
158. Neem leaves Dry Extract (*Azadirachta Indica*) (Bitters 2.5%)
159. Neem Seed Dry Extract (*Azadirachta Indica*) (Bitters 2%)
160. Neem Bark Dry Extract (*Azadirachta Indica*) (Bitters 2.5%)
161. Nettle Leaves Dry Extract (*Urtica dioca*) (Saponin 10%)
162. Nilophar Dry Extract (*Nymphaea alba*) (Vol Oil 3%)



163. Nirgundi Dry Extract (*Vitex negundo*) (Tannin 5%)
164. Nisoth Dry Extract (*Operculina turpethum*) (Resin 2%)
165. Noni/Morinda Dry Extract (*Morinda citrifolia*) (Morindin 10%)
166. Oats Dry Extract (*Aneva Sativa*)
167. Orange Peels Dry Extract (Flavanoids 10%)
168. Padmak Dry Extract (*Prunus puddum*)
169. Pan/Bettel Leaf Dry Extract (Tambul Resin 2%)
170. Papita seed Dry Extract (*Carica papaya* Flavones)
171. Parpata Dry Extract (*Cissampelos pareira*) (Saponin 10%)
172. Parwal Dry Extract (*Trichosanthes dioica*)
173. Pasanbhed Dry Extract (*Bergenia ligulata*) (Alkaloids 1%)
174. Patol Pattra Dry Extract (*Trichosanthes dioica*)
175. Peepal Dry Extract (*Ficus religiosa*) (Tannin 5%)
176. Pineapple Dry Extract (*Ananas comosus*) (2400 GDU)
177. Pine Bark Dry Extract (*Pinus Pinaster*) (OPC 95%)
178. Pipli Dry Extract (*Piper longum*) (Piprine 5%)
179. Pitpapda Dry Extract (*Fumaria indica*) (Bitter 1%)
180. Piyaj (Onion) Dry Extract (*Allium cepa*) (Sterols 10%)
181. Plash Phool Dry Extract (*Butea frondosa*) (Mucilage 5%)
182. Podophyllum Dry Extract (Alkaloids 1%)
183. Punarnawa Dry Extract (*Boehraavia diffusa*) (Bitter 1.5%)
184. Pushkarmool Dry Extract (*Inula racemosa*) (Bitter 3%)
185. Putrajivak Dry Extract (*Putranjiva roxburghii*) (Protein 10%)
186. Rasana Dry Extract (*Pluchea lanceolata*) (Bitter 1%)
187. Rasuth Dry Extract (*Berberis aristata*) (Berberine 10%)
188. Reetha Dry Extract (*Sapindus mukorossi*) (Saponin 20%)
189. Revend Chini Dry Extract (*Rheum emodi*) (Antraquines 3%)
190. Rohera Dry Extract (*Tecomella undulata*) (Tannin 10%)
191. Sadabahar Dry Extract (*Vinca rosea*) (Alkaloids 1-2.5%)
192. Safed Moosli Dry Extract (*Chlorophytum borivilianum*) (Saponin 40%)
193. Salai Guugal Dry extract (*Boswellia serrata*) (Boswellic acid 65%)
194. Salam Panja Dry Extract (*Dactylorhiza hatagirea*) (Glucosids 5%)



195. Salparni Dry Extract (*Desmodium gangeticum*) (Tannin 5%)
196. Saptparni Dry Extract (*Alstonia Scholaris*) (Bitter 2.5%)
197. Sarp Gandha Dry Extract (*Rauwolfia serpentina*) (Alkaloids 1.5%)
198. Sarpunkha Dry Extract (*Tephrosia pupurea*) (Rutin 4%)
199. Satawari Dry Extract (*Asparagus racemosus*) (Saponin 30%)
200. Saunf Dry Extract (*Foeniculum vulgare*) (Vol Oil 2%)
201. Saunth Dry Extract (*Zingiber officinale*) (Gingerols 2.5%)
202. Saw Palmato Dry Extract (*Serenoa Repens*) (Fatty Acids 45%)
203. Senna Dry Extract (*Cassia angustifolia*) (Sennosides 10%)
204. Shankhpuspi Dry Extract (*Evolvulus alsinoides*) (Bitter 2%)
205. Shikakai Dry Extract (*Acacia concinna*) (Saponin 20%)
206. Shilajit Dry Extract (*Asphalt Fluvic*) (acid 2%)
207. Silybum Dry Extract (*Silybum marianum*) (Silimarine 80%)
208. Singhara Dry Extract (*Trapa bispinosa*) (Mucilage 10%)
209. Siris Dry Extract (*Albizia lebbek*) (Tannin 5%)
210. Somlata Dry Extract (*Ephedra gerardiana*) (Alkaloids 0.5%)
211. Sowa Dry Extract (*Peucedanum graveolens*) (Protein 10%)
212. Soya Seed Dry Extract (*Glycine max*) (Protein 10%)
213. Soya(Soyabean) Dry Ext. (*Glycine max*) (Protein 10%)
214. Sugandhbala Dry Extract (*Valeriana Wallichii*) (Velerenic Acid 0.8%)
215. Sundab Dry Extract (*Ruta graveolens*) (Rutin 5%)
216. Supari Dry Extract (*Areca Catechu*) (Tannin 5%)
217. Suranjan Dry Extract (*Colchicum Luteum*) (Baker Alkaloids 0.4%)
218. Tagar Dry Extract (*Valeriana Brunoniana*) (Valeric 0.8%)
219. Tal Makhana(Kokilaksha) Dry Extract (*Hygrophilia spinosa*) (Mucilage 20%)
220. Talish Patra Dry Extract (*Taxus baccata*) (Vol Oil 10%)
221. Dandelion Dry Extract (*Taraxacum*) (Protein 10%)
222. Tejpan Dry Extract (*Laurus Nobilis*) (Vol Oil 3%)
223. Telakucha Dry Extract (*Cephalandra Indica*)
224. Tesu Phool Dry Extract (*Butea Monosperma*) (Vol Oil 2%)
225. Trifala Dry Extract (Tannin 30%)
226. Trikatu Dry Extract (Piprine 2%,Vol Oil 1%)



- 227. Tulsi Dry Extract (*Ocimum sanctum*) (Tannin 5%)
- 228. Ulat Kambal Dry Extract (*Abroma augusta*) (Tannin 2.5%)
- 229. Ustkhudus Dry Extract (*Prunella vulgaris*) (Vol Oil 2%)
- 230. Utangan Dry Extract (*Blepharis edulis*) (Alkaloids 1% v)
- 231. Vanafasha Dry Extract (Tannin 5%)
- 232. Varahikand Dry Extract (*Dioscorea bulbifera*) (Resin 2%)
- 233. Varun Chal Dry Extract (*Cralaeva nurvala*) (Saponin 5%)
- 234. Vasaka Dry Extract (*Adhatoda vasica*) (Alkaloids 0.5%)
- 235. Viavidang Dry Extract (*Emblica ribes*) (Alkaloids 1%)
- 236. Vibhurnam Dry Extract (*Viburnum Opulus*) (Tannin 7%)
- 237. Vidara mul Dry Extract (*Argyreia nervasa*) (Alkaloids 0.5%)
- 238. Vidarikand Dry Extract (*Pueraria tuberosa*) (Flavones 10%)
- 239. Vijaysar Dry Extract (*Carduus marianus*) (Saponin 10%)
- 240. Vilayati Imli Dry Extract (*Garcinia cambogia*) (H.C.A. 50%)
- 241. Zimikand Dry Extract (*Amorphopallus peniculatus* Carbohydrates)
- 242. Zufa Dry Extract (*Hyssopus officinalis*) (Vol Oil 4%)



Range Of Finished Products Offered by us

Aloevera Fibrous Juices

- Prepared from fresh Aloevera inner leaf pulp
- 100% natural
- 100% pure (No Added Water)
- Added Class II preservatives
- Long shelf life.
- Stable at room temperature

Following Variables are available with Aloevera fibrous juice

- Aloevera fibrous juice sugar free
- Aloevera fibrous juice sugar free
- Aloevera Fibrous juice with Lemon Extract
- Aloevera Fibrous juice with Ginger Extract
- Aloevera Fibrous juice with Orange Extract
- Aloevera Fibrous juice with Kiwi Extract
- Aloevera Fibrous juice with Extract

Giloy Juices

- Prepared from fresh Aloevera inner leaf pulp with added advantages of Giloy and tulsi extract
- Boosts Immunity
- Palatable formulation
- Long shelf life.
- Stable at room temperature



Range Of Finished Products Offered by us

Amla Juices

- Prepared from fresh Amla pulp
- 100% natural
- Added Class II preservatives
- Long shelf life.
- Stable at room temperature

Aloevera Juice fibreless

- Prepared from fresh Aloevera pulp
- 100% natural
- 100% pure (No Added Water)
- Added Class II preservatives
- Long shelf life
- Stable at room temperature.
- Aloevera Fibrous juice with Extract

Aloevera Gel

- 100% pure translucent Gel
- Long stability without color change
- Characteristic odor and viscosity
- For total skin Moisturization
- Suitable packing options available



Following variables are available with aloe vera gel

- * Plain Aloe vera
- * Aloe vera Gel with neem Extract
- * Aloe vera Gel with rose extract
- * Aloe vera Gel with sandalwood and turmeric extract
- * Aloe vera Gel Jasmin Extract
- * Aloe vera Gel Jasmin Extract
- * Aloe vera Gel with Papaya extract
- * Aloe vera gel with Cucumber.

Cream with Aloe vera Enriched with vitamin E

- Moisturizes and nourish skin
- Protects skin especially during winter
- Effective against sun damage
- Maintain moisture balance
- Keep skin glowing and healthy
- More benefit of added Vitamin E
- Immediate skin absorption



Following variables are available with Aloevera cream

- Aloevera cream with Vitamine E
- Alevera cream with Papaya Extract
- Aloevera cream with honey Almond
- Aloevera Cream with Papaya Milk
- For perfect moisture balance of skin
- Protects skin from dry environment
- Effective against sun damage
- Protective layer on skin
- For healthy skin in all season
- More benefit of added Vitamin E
- Protection from sunrays



Following variables are available with Aloevera lotion

- Aloevera lotion with Vitamine E
- Aloevera lotion with Papaya Extract
- Aloevera lotion with honey Almond
- Aloevera lotion with Papaya Milk

Rose water

- Prepared from fresh rose petals
- Added rose oil
- Stable at all physical aspects
- Attractive packing variables
- Added Glycerine for more Moisturisation





Contact us
Rupali Fuge
7768057253

Address: B-701, Bldg no- 22, Kingston Tower, Kauls Heritage, Vasai (West)
Dist Palghar - 401202 Maharashtra
Email : rutvikenterprisesvasai@gmail.com